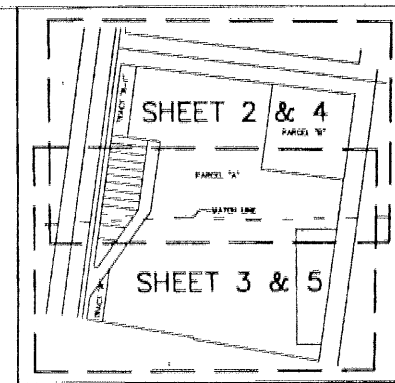
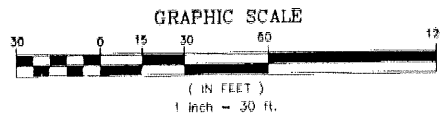


# DEL RATON PARK REPLAT NO. 1

A REPLAT OF A PORTION OF "DEL-RATON PARK", ACCORDING TO THE PLAT THEREOF, AS RECORDED IN PLAT BOOK 14, PAGES 9 AND 10 AND A PORTION OF "TROPIC PALMS PLAT NO. 1", ACCORDING TO THE PLAT THEREOF, AS RECORDED IN PLAT BOOK 25, PAGES 99 THROUGH 102 ALL OF THE PUBLIC RECORDS OF PALM BEACH COUNTY, FLORIDA AND A PORTION OF THE SOUTHEAST ONE-QUARTER (SE 1/4) OF SECTION 29, TOWNSHIP 46 SOUTH, RANGE 43 EAST AND A PORTION OF THE NORTHEAST ONE-QUARTER (NE 1/4) OF SECTION 32, TOWNSHIP 46 SOUTH, RANGE 43 EAST, SAID LANDS LYING IN SECTIONS 29 AND 32, TOWNSHIP 46 SOUTH, RANGE 43 EAST, CITY OF DELRAY BEACH, PALM BEACH COUNTY FLORIDA.

THIS INSTRUMENT PREPARED BY  
DAVID P. LINDLEY  
OF  
**CAULFIELD and WHEELER, INC.**  
SURVEYORS - ENGINEERS - PLANNERS  
7301-A WEST PALMETTO PARK ROAD, SUITE 100A  
BOCA RATON, FLORIDA 33433 - (561)392-1991  
JULY - 2000



**176**

STATE OF FLORIDA  
COUNTY OF PALM BEACH  
THIS PLAT WAS FILED FOR  
RECORD AT \_\_\_\_\_ M.  
THIS \_\_\_\_\_ DAY OF \_\_\_\_\_  
A.D. 2001 AND DULY RECORDED  
IN PLAT BOOK \_\_\_\_\_ ON  
PAGES \_\_\_\_\_ AND \_\_\_\_\_

DOROTHY H. WILKEN  
CLERK CIRCUIT COURT

BY: \_\_\_\_\_  
DEPUTY CLERK

KEY MAP N.T.S.

SHEET 3 OF 5

